



The Tool Crib Assistant, Standard Edition

www.saltboxsystems.com
support@saltboxsystems.com
+1-941-284-3697

The Tool Crib Assistant, Standard Edition

TC, The Tool Crib Assistant, Bar Code Edition (Howard, Manny logged in)

File Edit Log Out Items' Management Reporting Other Management Window Help

Tool Crib Items

The Index

- All Tools
- [-] Abrasives
- [-] Drill Mill Groove
 - [-] Ball Nose End Mill
 - [-] Center Drills
- [-] Chamfer Tools
- [-] Corner Radius Tools
- [-] Counter Bores
- [-] Counter Sinks
- [-] Dovetail Cutters
- [-] Drills
- [-] End Mills
- [-] Form Tools
- [-] Inserts
- [-] Miscellaneous
- [-] Reamers
- [-] Taps
- [-] Turbine
- [-] Turning

Expand Contract

The Items Include retired items

Search Clear

Item ID	Description
BN0001	R218.19-00.75-3-21-M
BN0002	R218.19-01.00-3-26-H
BN0003	MM12-0.500-B90P-M05 T60M
BN0005	MM08-0.315-B90-MD03 T60M
BN0006	BDE323R04 GRADE 581
BN0007	BDE323R05 GRADE IN1530 INGERSOLL
BN0008	SPE33R01 GRADE IN1530 INGERSOLL
BN0090	1/16 ball nose
BN0100	3/16" - 330MC
BN0101	9/32" - 323 (3 flute)
BN0102	1/4" - 330MC
BN0102.5	1/4 730M EXTRA LENGTH
BN0103	9/32" - 330MC (4 flute) (Replaced w/ BN0101)
BN0104	5/16" - 330MC
BN0105	3/8" - 330MC
BN0106	13/32"-330MC
BN0107	7/16" - 330MC
BN0108	1/2" - 330MC
BN0109	5/8" - 330MC
BN0110	5/8" - WITH 1/2" SHANK
BN0112	3/4" - 330MC
BN0113	7/8 CARBIDE BALL NOSE
BN0115	1" - 330MC
BN0116	1" - 330MC ALTERED 1/2" SHANK (Do not order)
BN0200	3/16" - 330M
BN0201	1/4" - 330M
BN0202	9/32" - 330M

Insert Change Delete Copy Links

Details of the Selected Item

Serial no.: _____ Crib location: DN2V

Available: Issued:

Total in inventory: On order:

Removed from service:

Actions

The Tool Crib Assistant, Standard Edition

The Standard Edition can be fully utilized with or without barcode scanning as you wish or as conditions require. Please see the last three pages of this document for some specifics on barcode scanning.

From the Tool Crib Items window, you may...

- ✓ Add, change or delete an index section
- ✓ Add, change, or delete an item
- ✓ Add a new item starting from a copy of an existing one to reduce data entry when you have multiples of the same kind of tool.
- ✓ Link documents or web site URL's to an item, such as a record of purchase, operating manual, etc.

- ✓ Immediately determine the quantity of an item that is currently...
 - Available in the crib or store
 - In inventory
 - Issued to tool users
 - On order
 - Removed from service

- ✓ Display...
 - An item's transaction history
 - The tool users to which an item is currently issued
 - The orders for an item that are currently open
 - The removal from service entries for an item

- ✓ Issue some quantity of an item to a tool user
- ✓ Return some quantity of an item from a tool user
- ✓ Expend some quantity of a consumable item
- ✓ Record an order for some quantity of an item
- ✓ Receive some quantity of an item from an order
- ✓ Remove some quantity of an item from service
- ✓ Restore some quantity of an item to service
- ✓ Adjust an item's quantity in inventory

The Tool Crib Assistant, Standard Edition

Other functionality includes...

- ✓ Management of items currently out of service
- ✓ Management of lists of tools that can be issued to a tool user at one time
- ✓ Real-time alerts when an item's quantity on hand or available reaches its reorder point
- ✓ Management of your crib locations, including the display and/or print of the items assigned to a location
- ✓ Management of your orders that have not yet been filled
- ✓ Management of your reorders
- ✓ Management of your suppliers, including the display and/or report of the items last purchased from a supplier
- ✓ Management of your tool users, including the display and/or report of the items currently issued to a tool user and the transactions for a tool user
- ✓ Printing of, or export for, barcode labels

Reports include...

- ✓ A list of your items' activity, by month, for a specified period
- ✓ An items' catalog
- ✓ The current status of your items, particularly useful for audits
- ✓ The value of your items inventory
- ✓ All items currently issued to tool users
- ✓ Items that have been retired
- ✓ Items that have had no activity during a specified period
- ✓ Orders not yet filled
- ✓ The cost of transactions for tool users during a specified period
- ✓ Items' transactions during a specified period

The Tool Crib Assistant, Standard Edition

TCs, The Tool Crib Assistant, Standard Edition (Howard, Manny logged in)

File Edit Log Out Items' Management Reporting Other Management Window Help

Local Bar Code Scan

Scan data:

Action: Item bar code:

Do not assign a tool user

Tool user bar code: Tool user ID:

Tool user:

Quantity: Date of the transaction:

Print an issue receipt

Expend reason:

The item...

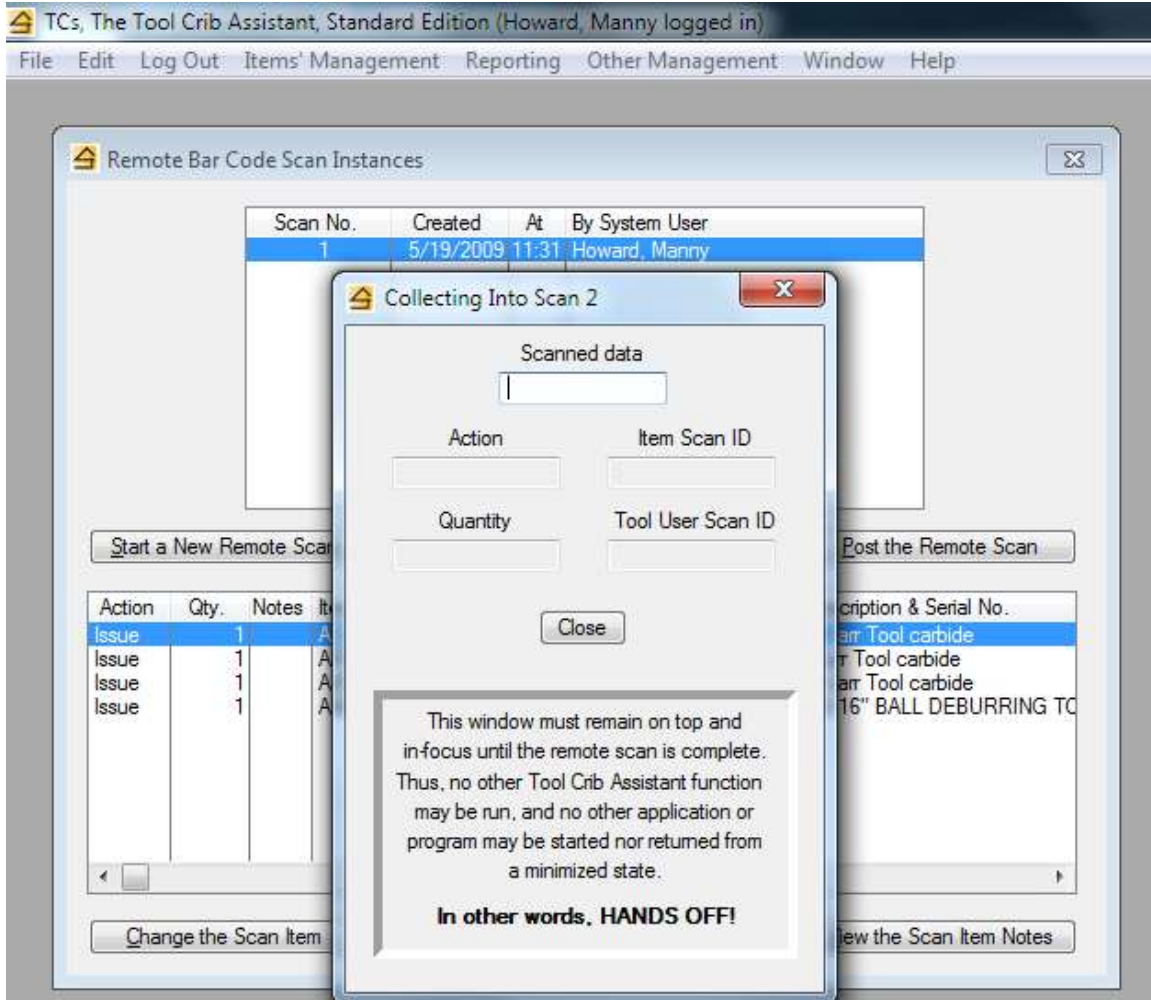
Item ID				Crib location
Description and serial no.				
Index				
Available	In inventory	Issued	On order	Removed
<input type="text" value="0"/>	<input type="text" value="0"/>	<input type="text" value="0"/>	<input type="text" value="0"/>	<input type="text" value="0"/>

OK Reset

Local scanning is used when you are working with a barcode scanner at the computer.

After scanning the item's barcode, the item information is displayed in the raised panel. You may scan the remaining data items or you may use the keyboard and mouse to complete them.

The Tool Crib Assistant, Standard Edition



Remote scanning is used when you are working with a barcode scanner away from the computer. You first create a "scan instance", basically some temporary storage where your scanned data will be stored.

Then you walk away and start scanning the barcodes of items, tool users, and the actions (issue, return, etc.) you wish taken.

When you've finished remote scanning, you will return to the computer and close the window that's been collecting your scanned data. The system then presents a list showing the scan entries made – after a quick review, a button press will "post" all the scanned transactions to the system.