



The Tool Crib Assistant, Pro I Edition

www.saltboxsystems.com
support@saltboxsystems.com
+1-941-284-3697

The Tool Crib Assistant, Pro I Edition

TCp1, The Tool Crib Assistant, Pro I Edition (Howard, Manny logged in)

File Edit Log Out Operations Operations Reporting Ordering Other Window Help

Inventory Items

The Index

- All Inventory Items
- ABRASIVES
- ADHESIVES & SEALANTS
- AIR TOOLS
- BORE GAGE SETS
- BORING BARS
- BORING TOOL
- BUSHINGS
- CALIBRATION
- CALIPERS
- CHAMFER GAGE
- COLLETS
- CUTTING TOOLS
- CYLINDER BORE GAGE
- + DEPT 56/MAINT
- DEPT 60
- DEPT 62
- + DEPT 81-91/ASSEMBLY
- DEPT 92/WELD
- + DEPT 95/ASSEMBLY
- DEPTH MICROMETER
- DIAL BORE GAGE
- DREAM DRILLS
- DRILLS
- ELECTRIC MOTORS
- FACE MILLS
- FILTERS
- FLANGE PROTECTORS
- + GAGES

Expand Contract

The Items

Search ID
 Search description
 Include retired items

Search Clear

Item ID	Description
LNCLN 10485-8	AMMETER
LNCLN 6602-25	SHUNT ASSEMBLY
LORD 305-1/2	LORD HIGH-PERFORMANCE ADHESIVE CARTRIDGE,
LYSL REC 76334	LYSOL ALL PURPOSE CLEANER, LEMON SCENT, 1 G,
MCM 44465A53	NYLON SHANK BRUSH WHEELS, 1 DIA.
MCM 9143K25	2X 2X 4 FT 1018 SQ. BAR
MCMSTR 3098A115	HIGH SPEED STEEL SIX-FLUTE COUNTERSINK 1/2 D
MCMSTR 60235K77	DIE CAST ZINC CONTEMP STYLE ADJ HANDLE M8X
MCMSTR 90974A115	BLACK-OXIDE STEEL PARTIAL-THREAD T-SLOT NUT
MDUSA 67166611	SOLDERING ACCSSRY, COTTON APPLICATIONS, 6 IN
METABO 339203020	6" METABO GRINDER GUARD
MGNVSL CT-4B	CHART TAPE, BLACK, 1/8 IN WIDE, FOR USE WITH D
MITUTOYO 2-6"	2-6" BORE GAGE SET
MLLY 532	MALLORY SNOW BRUSH, FIXED HEAD, PLASTIC, 26 I
MSC 00651810	4IN OD X 3/8IN W X 1/2ID WIRE WHEEL FOR HEMSA
MSC 02197408	CARBIDE-TIPPED SPRL FLT STRAIGHT SHNK CHUCK
MSC 02598704	BRITE-MARK PAINT MARKERS, RED
MSC 03143302	REPAIR/CALIBRATE STURTEVANT TORQUE WRENCH
MSC 05615042	PROTO/BLACKHAWK COMBINATION WRENCH 15/16
MSC 06529788	LATHE CHUCK REPLACEMENT SHIELD FOR MORI
MSC 06568232	15 X 8 X .15 MAGNIFIER
MSC 08662140	XNS 47 CLAMP SCREW COMPONENTS USA
MSC 09021007	ETCH O MATIC ELECTRIC ETCHING KIT
MSC 09809484	AIR TOOL OIL 4OZ. BOTTLE
MSC 54607585	GREASE TUBE FOR 90DEG DIE GRINDERS COOPER
MSC 54607619	GREASE GUN COOPER TOOL
MSC 59898734	1 7/8-12 H6 6FL HERTEL HAND BTM TAPS

Add Change Locations Label(s)

Delete Copy Links

The Item in All Locations...

Available:

In inventory:

Checked out:

On order:

Removed from service:

The Item's Details...

Transactions

Items Checked Out

Orders

Removals From Service

Actions for the Item...

Check Out Check In

Remove Restore

Transfer

Adjust

The items

The Tool Crib Assistant, Pro I Edition

The Pro I Edition can be fully utilized with or without barcode scanning as you wish or as conditions require. Please see the last three pages of this document for some specifics on barcode scanning.

From the Inventory Items window, you may...

- ✓ Add, change or delete an index section
- ✓ Add, change, or delete an item
- ✓ Add a new item starting from a copy of an existing one to reduce data entry when you have multiples of the same kind of tool
- ✓ Manage the additional cribs/locations where the item is stocked
- ✓ Print barcode labels for an item in each location where it's stocked
- ✓ Link documents or web site URL's to an item, such as a record of purchase, operating manual, etc.

- ✓ Immediately know an item's quantity, in all cribs/locations, that is currently...
 - Available
 - In inventory
 - Checked out to tool users
 - On order
 - Removed from service

- ✓ Display for any item...
 - The transaction history
 - The tool users to which an item is currently checked out
 - The order history
 - The current and historical removals from service history

- ✓ Check out some quantity of an item to a tool user for a tool customer
- ✓ Check in some quantity of an item from a tool user
- ✓ Remove some quantity of an item from service
- ✓ Restore some quantity of an item to service
- ✓ Transfer some quantity of an item from one crib/location to another
- ✓ Adjust an item's quantity in inventory

The Tool Crib Assistant, Pro I Edition

Other functionality includes...

- ✓ Management of orders and receipts, including preparation of a request for purchase
- ✓ Management of items currently out of service
- ✓ Management of alerts indicating the quantity of an item has reached the reorder point
- ✓ Management of packages of tools that can be issued to a tool user at one time
- ✓ Management of your cribs and locations, including the display and/or print of the items assigned to a crib or a location
- ✓ Management of your suppliers, including the display and/or report of the items last purchased from a supplier
- ✓ Management of your tool users, including the display and/or report of the items currently checked out to a tool user and the tool user's transactions history
- ✓ Management of your tool customers, including the display and/or report of the items currently checked out for a tool customer and the tool customer's transactions history

Reports include...

- ✓ A list of your items' activity, by month, for a specified period
- ✓ An items' catalog
- ✓ The current status of your items, both in total and in each location
- ✓ The value of your items inventory
- ✓ All items currently checked out to tool users
- ✓ Items that have been retired
- ✓ Items that have had no activity during a specified period
- ✓ The cost of transactions for tool users during a specified period
- ✓ Items' transactions during a specified period

The Tool Crib Assistant, Pro I Edition

TCp1, The Tool Crib Assistant, Pro I Edition (Howard, Manny logged in)

File Edit Log Out Operations Operations Reporting Ordering Other Window Help

Local Barcode Scan

Scan data:

Action: Item barcode:

Tool user barcode: Tool user ID:

Tool user:

Tool customer barcode:

Tool customer:

Date of the transaction: Print a check out receipt

Quantity checked out: Quantity consumed:

The item...

Description and serial no.

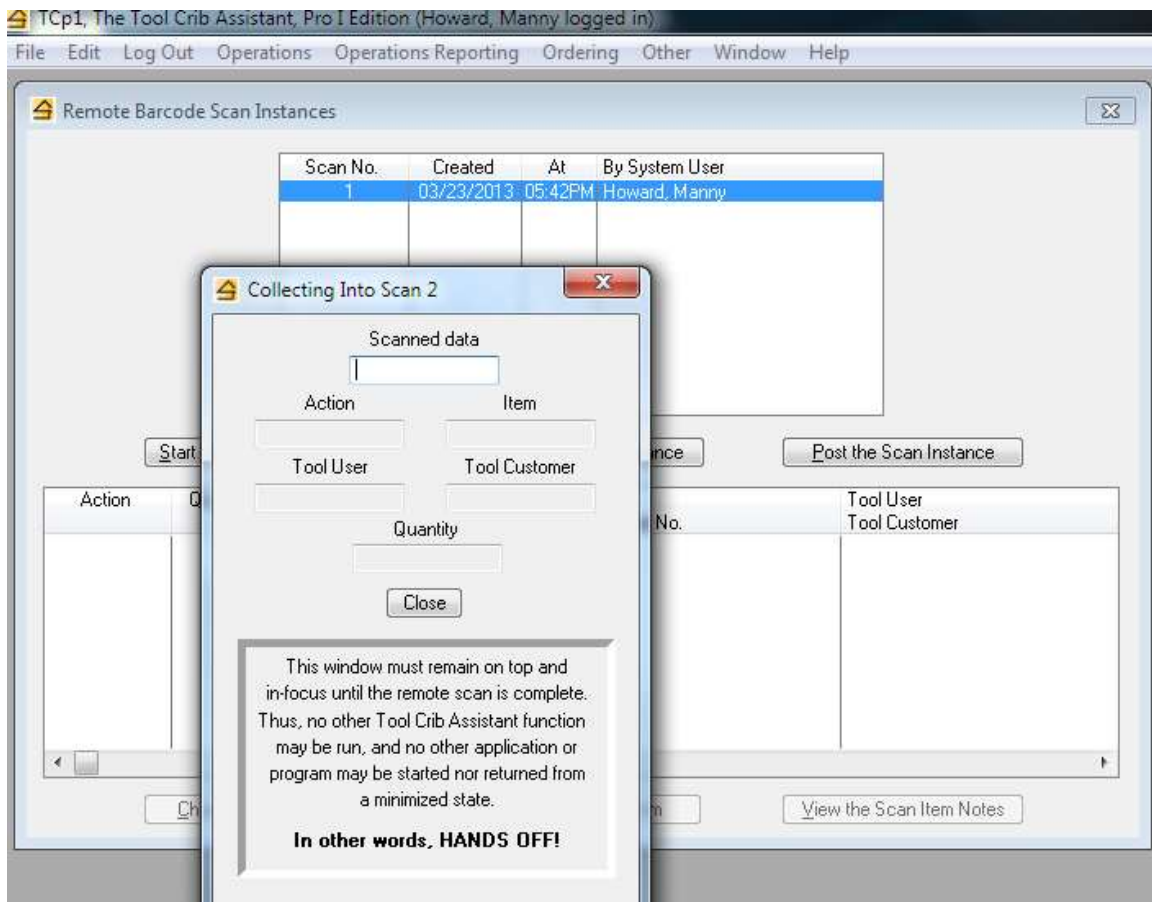
Index Section

Available	In inventory	Checked Out	Removed
<input type="text" value="0"/>	<input type="text" value="0"/>	<input type="text" value="0"/>	<input type="text" value="0"/>

Local scanning is used when you are working with a barcode scanner at the computer.

After scanning the item's barcode, the item information is displayed in the raised panel. You may scan the remaining data items or you may use the keyboard and mouse to complete them.

The Tool Crib Assistant, Pro I Edition



Remote scanning is used when you are working with a barcode scanner away from the computer. You first create a "scan instance", basically some temporary storage where your scanned data will be stored.

Then you walk away and start scanning the barcodes of items, tool users, and the actions (issue, return, etc.) you wish taken.

When you've finished remote scanning, you will return to the computer and close the window that's been collecting your scanned data. The system then presents a list showing the scan entries made – after a quick review, a button press will "post" all the scanned transactions to the system.