



The Tool Crib Assistant, Contractor Edition

www.saltboxsystems.com
support@saltboxsystems.com
+1-941-284-3697

The Tool Crib Assistant, Contractor Edition

TCc, The Tool Crib Assistant, Contractor Edition (Howard, Manny logged in)

File Edit Log Out Items' Management Reporting Other Management Window Help

The Index

- All Tools
- Brushes
- Paint Sprayers
- Roller Covers

Expand Contract

The Items Include retired items

Search Clear

Item ID	Description
ET0001	Medium mesh airless spray gun filters, 2-pack
ET0002	Flat sash, 3" polyester paint brush
ET0003	Angle sash, 3" polyester paint brush
ET0004	Roller, 9" X 1/4" Economy
ET0005	Roller, 9" X 3/8", Purdy White Dove Dralon, 3-pack
ET0007	Angle sash, 2" polyester paint brush
ET0008	TitanXT420 pump

Insert Change Delete Copy Links

Details of the Selected Item

Serial no.:

Crib location:

Available: Issued: Iss

Total in inventory: Trx On order: Ord

Removed from service: Rmv

Actions

Issue Return

Expend

Order Receive

Remove Restore

Adjust

The Tool Crib Assistant, Contractor Edition

The Contractor Bar Code Edition can be fully utilized without bar code scanning if you wish or if conditions require. It includes all the capabilities of the Standard Edition and adds additional options for bar code scanning and bar code label printing.

From the Tool Crib Items window, you may...

- ✓ Add, change or delete an index section
- ✓ Add, change, or delete an item
- ✓ Add a new item starting from a copy of an existing one to reduce data entry when you have multiples of the same kind of tool.
- ✓ Link documents or web site URL's to an item, such as a record of purchase, operating manual, etc.

- ✓ Immediately determine the quantity of an item that is currently...
 - Available in the crib or store
 - In inventory
 - Issued to tool users
 - On order
 - Removed from service

- ✓ Display...
 - An item's transaction history
 - The tool users to which an item is currently issued
 - The orders for an item that are currently open
 - The removal from service entries for an item

- ✓ Issue some quantity of an item to a tool user
- ✓ Return some quantity of an item from a tool user
- ✓ Expend some quantity of a consumable item issued to a tool user **
- ✓ Record an order for some quantity of an item
- ✓ Receive some quantity of an item from an order
- ✓ Remove some quantity of an item from service
- ✓ Restore some quantity of an item to service
- ✓ Adjust an item's quantity in inventory

The Tool Crib Assistant, Contractor Edition

Other functionality includes...

- ✓ Management of items currently out of service
- ✓ Management of lists of tools that can be issued to a tool user at one time
- ✓ Real-time alerts when an item's quantity on hand or available reaches its reorder point
- ✓ Management of your crib locations, including the display and/or print of the items assigned to a location
- ✓ Management of your orders that have not yet been filled
- ✓ Management of your reorders
- ✓ Management of your suppliers, including the display and/or report of the items last purchased from a supplier
- ✓ Management of your tool users, including the display and/or report of the items currently issued to a tool user and the transactions for a tool user

Reports include...

- ✓ A list of your items' activity, by month, for a specified period
- ✓ An items' catalog
- ✓ The current status of your items, particularly useful for audits
- ✓ The value of your items inventory
- ✓ All items currently issued to tool users
- ✓ Items that have been retired
- ✓ Items that have had no activity during a specified period
- ✓ Orders not yet filled
- ✓ The cost of transactions for tool users during a specified period
- ✓ Items' transactions during a specified period

** With the Contractor Bar Code Edition, you may not scan or select an item and expend it. You may only issue items, durable or consumable, to a tool user. When it's time to return the items from the tool user, you'll return those actually returned to the crib or store and expend any consumables not returned. If between the time of the original issue and the final return more of a consumable item is needed, more are simply issued to the tool user, and the tool user's record reflects the additional quantity.

This approach is intended for settings such as construction where you issue some quantity of a consumable thought to be sufficient, knowing full well that more may be needed or that some quantity may not be used.

The Tool Crib Assistant, Contractor Edition

TCc, The Tool Crib Assistant, Contractor Edition (Howard, Manny logged in)

File Edit Log Out Items' Management Reporting Other Management Window Help

Local Bar Code Scan

Scan data:

Action: Item bar code:

Tool user bar code: Tool user ID:

Tool user:

Quantity: Date of the transaction:

Print an issue receipt

The item...

Item ID Crib location

Description and serial no.

Index

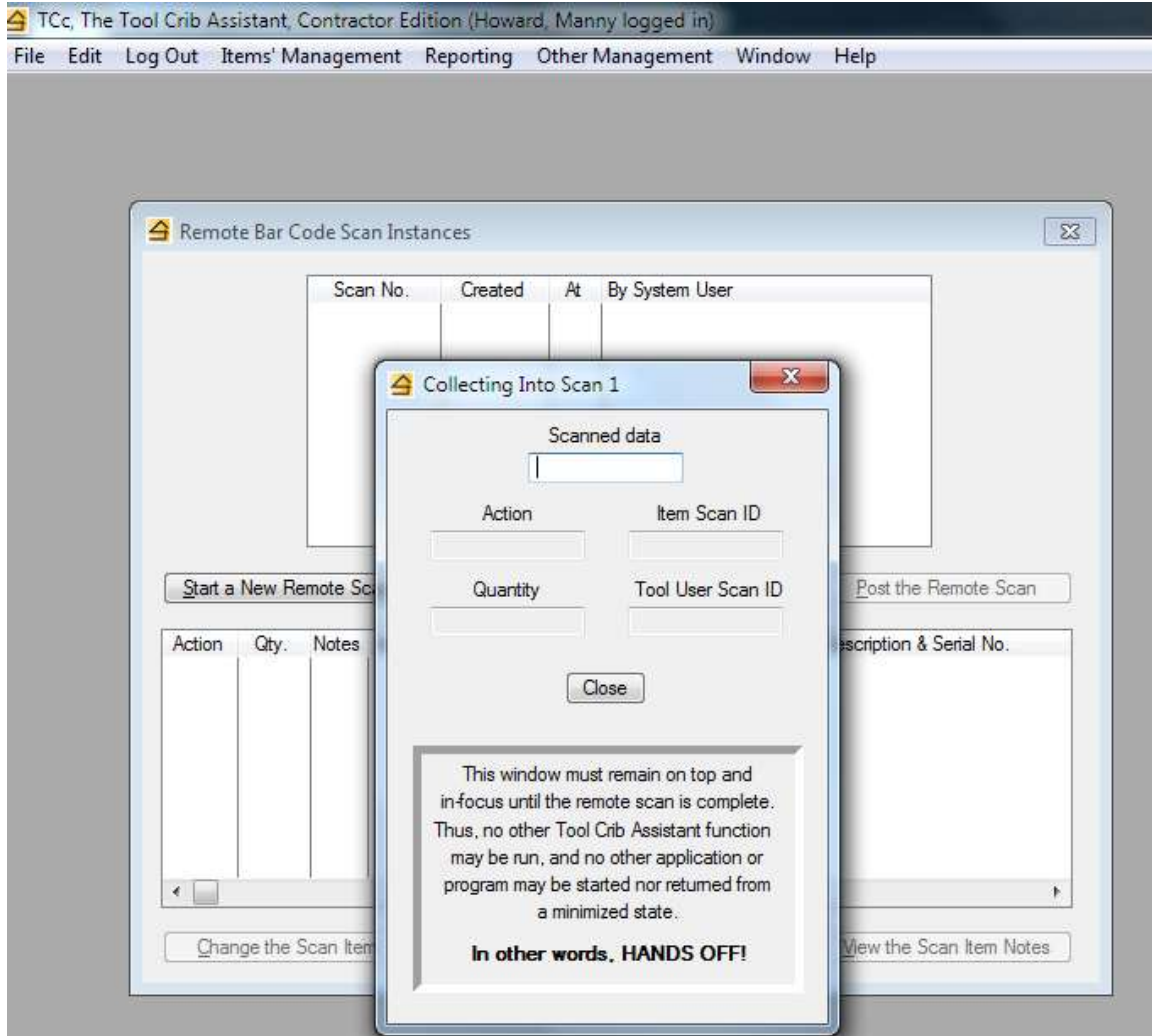
Available	In inventory	Issued	On order	Removed
<input type="text" value="0"/>	<input type="text" value="0"/>	<input type="text" value="0"/>	<input type="text" value="0"/>	<input type="text" value="0"/>

OK Reset

Local scanning is used when you are working with a bar code scanner at the computer.

After scanning the item's bar code, the item information is displayed in the raised panel. You may scan the remaining data items or you may use the keyboard and mouse to complete them.

The Tool Crib Assistant, Contractor Edition



Remote scanning is used when you are working with a bar code scanner away from the computer. You first create a "scan instance", basically some temporary storage where your scanned data will be stored.

Then you walk away and start scanning the bar codes of items, tool users, and the actions (issue, return, etc.) you wish taken.

When you've finished remote scanning, you will return to the computer and close the window that's been collecting your scanned data. The system then presents a list showing the scan entries made – after a quick review, a button press will "post" all the scanned transactions to the system.